

Datasheet



Mouse mAb to **hCG-beta**
Clone **5H4-E2**
Isotype **IgG1-κ**

Source

A BALB/c mouse was hCG beta, conjugated to various carrier proteins.
Fusion partner: SP-2/0-Ag14.

Specifications

5H4-E2 reacts with hCG beta chain, which is specific for hCG. The alpha chain is identical among hCG, TSH, FSH and LH. While hCG is secreted in large quantities by normal trophoblasts, it is present only in trace amounts in non-pregnant urine and sera but rises sharply during pregnancy. Besides trophoblastic tumors e.g. choriocarcinoma, large cell carcinoma, adenocarcinoma and squamous cell carcinoma of the lung are also positive in 90%, 60% and 20% of cases respectively. In hCG producing tumors, including also certain testicular and embryonic carcinomas, the beta chain is produced in higher quantities than the alpha or dimeric chains. hCG expression by non-trophoblastic tumors may indicate aggressive behavior.

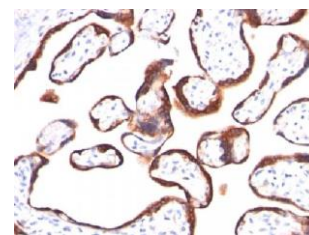


Figure 1: Human placenta stained with 5H4-E2 (paraffin)

Species reactivity

Positive: human.

Applications

Pregnancy and oncology.

Frozen sections	Paraffin sections
+	+

Format

Produced in tissue culture, contains no host Ig. Antibodies are affinity purified and presented in PBS with 0,02 % sodium azide.

Stored at 4°C- 8°C, shelf life is at least 24 months after purchase.

Dilution advice

- Immunohistology (1-2 µg/ml for 30 min at RT; staining of formalin-fixed tissues requires no pre-treatment).

Positive control

JAR or TT Cells. Placenta.

References

- McDonald EA et. al. *Endocrinology* **150**:4358-65 (2009).