

Catalogue No.

Qty:

800 µg

Anti-Rab5a

Source: Goat

General description: Goat polyclonal antibody to mouse Rab5a. Rab5a belongs to the small GTPase superfamily, Rab family. Rab5a is an Early Endosome Marker and functions as a key regulator of vesicular trafficking during early endocytosis.

Alternative names: RAB5A, RAS-associated protein RAB5A, ras-related protein Rab-5A antibody.

Form: Polyclonal antibody supplied as a 200 µl (4 mg/ml) aliquot in PBS, 20% glycerol and 0.05% sodium azide. This antibody is epitope-affinity purified from goat antiserum.

Immunogen: Purified recombinant peptide derived from within residues 115 aa to the C-terminus of mouse Rab5a produced in E. coli.

Specificity: Detects Rab5a protein by Western blot in cell lysates and transfected cells with GFP-Rab5a. This Ab is specific for Rab5a; it does not recognize Rab5b and Rab5c.

Reactivity: Reacts with Human, Rat, Mouse, Monkey and Canine proteins

Sample	WB	IHC (F)	IHC (P)	IF	ELISA
Human	+++	ND	ND	ND	ND
Rat	+++	ND	ND	ND	ND
Mouse	+++	ND	ND	ND	ND
Canine	+++	ND	ND	ND	ND
Monkey	+++	ND	ND	ND	ND

+++ excellent, ++ good, + poor, ND not determined

Usage:

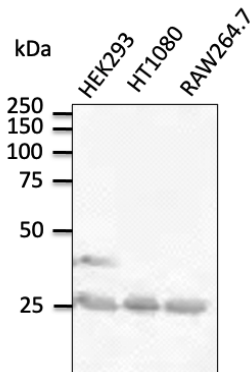
WB: 1:250-1:2,000

Storage: For continuous use, store at 2-8 C for one-two days. For extended storage, store in -20 C freezer. Working dilution samples should be discarded if not used within 12 hours.

Special instructions: The antibody solution should be gently mixed before use..

References:

1. Cardoso MHS, PhD Thesis, NOVA University of Lisbon, Portugal 2018



Anti-Rab5a Ab at 1/500 dilution; lysates at 100 μ g per lane; rabbit polyclonal to goat IgG (HRP) at 1/10,000 dilution;

For research use only, not for diagnostic use

SICGEN's Proprietary Immunogen Policy

In order to produce high specific antibodies SICGEN has invested a lot of time and effort into selecting immunogen sequences. SICGEN has decided to protect this information by not publishing it on the website. However, these sequences are available on request.