

**Catalogue No.**

**Qty:**

200 µg

500 µg

## Anti-Rab27a

**Source:** Goat

**General description:** Goat polyclonal antibody to mouse Rab27a. Rab27a belongs to the small GTPase superfamily, Rab family. The protein is membrane-bound and involved in lysosome-related vesicle transport and small GTPase mediated signal transduction.

**Alternative names:** GS2, GTP-binding protein Ram, rab-27, ras-related protein Rab-27A, RAB27, RAM.

**Form:** Polyclonal antibody supplied as a 200 or 500 µl (1 mg/ml) aliquot in PBS, 20% glycerol and 0.05% sodium azide. This antibody is epitope-affinity purified from goat antiserum.

**Immunogen:** Purified recombinant peptide derived from within residues 120 aa to the C-terminus of mouse Rab27a produced in E. coli.

**Specificity:** Detects Rab27a by Western blot in the following human, rat and mouse whole cell lysates and transfected cells with GFP-Rab27a. This antibody also recognizes Rab27b protein.

**Reactivity:** Reacts with Human, Rat, Mouse, Monkey and Canine proteins

Sample	WB	IHC (F)	IHC (P)	IF	ELISA
Human	+++	+++	+++	+++	ND
Rat	+++	+++	+++	+++	ND
Mouse	+++	+++	+++	+++	ND
Canine	+++	+++	+++	+++	ND
Monkey	+++	+++	+++	+++	ND

+++ excellent, ++ good, + poor, ND not determined

**Usage:**

WB: 1:250-1:2,000

IF: 1:50-1:200

IHC (P): 1:50-1:400

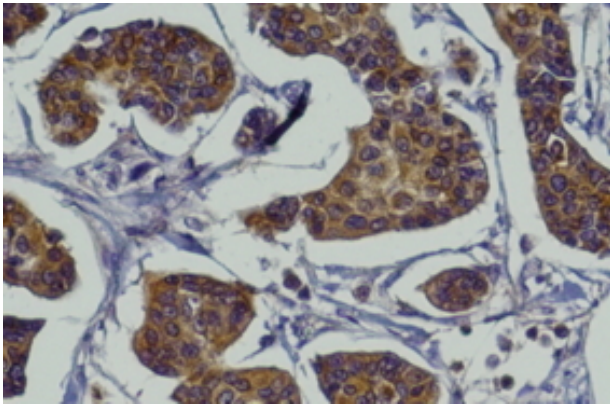
IHC (F): 1:50-1:400

**Storage:** Store at -20 C for long-term storage. Store at 2-8 C for up to one month.

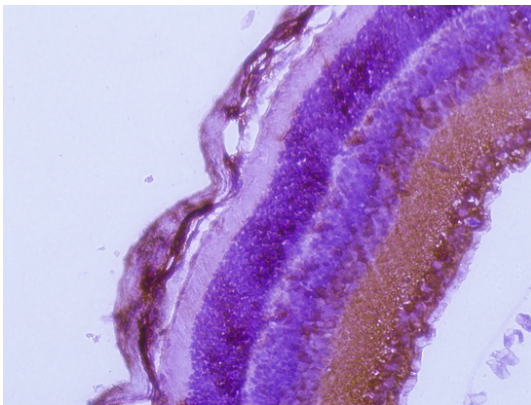
**Special instructions:** The antibody solution should be gently mixed before use. Avoid freeze/thaw cycles..

### References:

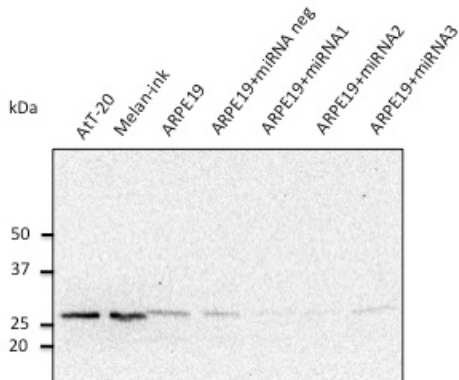
1. Ramsay E, Raviña M, Sarkhel S, et al. *Pharmaceutics* 2020 Jul. PMID: 32708811
2. Sanzà P, Evans RD, Briggs DA, et al. *J Cell Sci* 2019 Apr. PMID: 30898842
3. Pelkonen L, Reinisalo M, Morin-Picardat E et al. *PLoS One* 2016 Aug, PMID: 27551967
4. Reichhart N, Markowski M, Ishiyama S et al. *Cell Signal* 2015 Jul, PMID: 26235199



Anti-Rab27a antibody IHC staining of mammary tissue; Immunohistochemistry of formalin-fixed, paraffin-embedded tissue after heat-induced antigen retrieval; Antibody concentration 1/200;



Anti-Rab27a antibody IHC staining of albino mouse retina; Immunohistochemistry of formalin-fixed, paraffin-embedded tissue after heat-induced antigen retrieval; Antibody concentration 1/200;



Anti-Rab27 antibody at 1/500 dilution; rabbit polyclonal to goat IgG (HRP) at 1/10,000 dilution;

For research use only, not for diagnostic use

**SICGEN's Proprietary Immunogen Policy**

In order to produce high specific antibodies SICGEN has invested a lot of time and effort into selecting immunogen sequences. SICGEN has decided to protect this information by not publishing it on the website. However, these sequences are available on request.