

Catalogue No.

Qty:

300 µg

## Anti-HIF1a

**Source:** Goat

**General description:** Goat polyclonal to alpha subunit of transcription factor hypoxia-inducible factor-1 (HIF-1), which is a heterodimer composed of an alpha and a beta subunit. HIF-1 functions as a master regulator of cellular and systemic homeostatic response to hypoxia by activating transcription of many genes, including those involved in apoptosis, angiogenesis, energy metabolism, and other genes whose protein products increase oxygen delivery or facilitate metabolic adaptation to hypoxia. HIF-1 thus plays an essential role in tumour angiogenesis, embryonic vascularization, and pathophysiology of ischemic disease.

**Alternative names:** alpha subunit (basic helix-loop-helix transcription factor), ARNT interacting protein, basic-helix-loop-helix-PAS protein MOP1, bHLHe78, class E basic helix-loop-helix protein 78, HIF-1alpha, HIF1, HIF1-ALPHA, HIF1a, hypoxia inducible factor 1, hypoxia-inducible factor 1 alpha isoform I.3, hypoxia-inducible factor 1, hypoxia-inducible factor 1-alpha, member of PAS protein 1, member of PAS superfamily 1, MOP1, PASD8, PAS domain-containing protein 8 antibody.

**Form:** Polyclonal antibody supplied as a 100 µl (3 mg/ml) aliquot in PBS, 20% glycerol and 0.05% sodium azide. This antibody is epitope-affinity purified from goat antiserum.

**Immunogen:** Purified recombinant peptide derived from within residues 470 to 590 aa of human HIF1a produced in E. coli.

**Specificity:** Detects HIF1a in transfected cells and a band of approximately 120 kDa by Western blot in cell lysates.

**Reactivity:** Reacts with Human, Rat, Mouse, Monkey and Canine proteins

Sample	WB	IHC (F)	IHC (P)	IF	ELISA
Human	+++	ND	ND	ND	ND
Rat	+++	ND	ND	ND	ND
Mouse	+++	ND	ND	ND	ND
Canine	+++	ND	ND	ND	ND
Monkey	+++	ND	ND	ND	ND

+++ excellent, ++ good, + poor, ND not determined

### Usage:

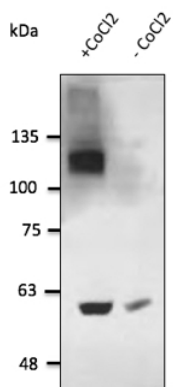
WB: 1:500-1:2,000

**Storage:** For continuous use, store at 2-8 C for one-two days. For extended storage, store in -20 C freezer. Working dilution samples should be discarded if not used within 12 hours.

**Special instructions:** The antibody solution should be gently mixed before use..

### References:

1. Ramalho AR, Toscano A, Pereira P. et al. Rev Port Cardiol. 2017 May 4. PMID: 28479269



Anti-HIF1a Ab at 2,500 dilution; HT1080 cells in the presence of CoCl<sub>2</sub>; lysate at 100 µg per lane; rabbit polyclonal to goat IgG (HRP) at 1/10,000 dilution;

For research use only, not for diagnostic use

### SICGEN's Proprietary Immunogen Policy

In order to produce high specific antibodies SICGEN has invested a lot of time and effort into selecting immunogen sequences. SICGEN has decided to protect this information by not publishing it on the website. However, these sequences are available on request.