

**Catalogue No.**

**Qty:**

600 µg

## Anti-CD31

**Source:** Goat

**General description:** N/A

**Alternative names:** N/A

**Form:** Polyclonal antibody supplied as a 200 µl (3 mg/ml) aliquot in PBS, 20% glycerol and 0.05% sodium azide. This antibody is epitope-affinity purified from goat antiserum.

**Immunogen:** Purified recombinant peptide within residues 690 aa to the C-terminus of human CD31 produced in E. coli.

**Specificity:** Using PBM cell lysates detects a 130-140 kDa band by Western blot.

**Reactivity:** Reacts with Human, Rat, Mouse, Monkey and Canine proteins

Sample	WB	IHC (F)	IHC (P)	IF	ELISA
Human	+++	ND	ND	ND	ND
Rat	+++	ND	ND	ND	ND
Mouse	+++	ND	ND	ND	ND
Canine	+++	ND	ND	ND	ND
Monkey	+++	ND	ND	ND	ND

+++ excellent, ++ good, + poor, ND not determined

**Usage:**

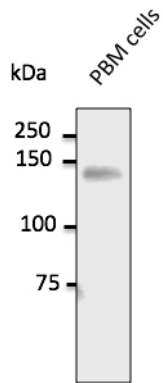
WB: 1:500-1:2,000

**Storage:** For continuous use, store at 2-8 C for one-two days. For extended storage, store in -20 C freezer. Working dilution samples should be discarded if not used within 12 hours.

**Special instructions:** The antibody solution should be gently mixed before use..

## References:

1. 3. Rodrigues T, Matafome P, Sereno J, et al. Sci Rep 2017 May. PMID: 28490763
2. 2. Rodrigues TDA, PhD Thesis, University of Coimbra, Portugal 2018
3. 1. Rodrigues T, Borges P, Mar L, et al. Pharmacol Res 2020 Sep. PMID: 32942016



Endogenous CD31 detected at 1/500 dilution; lysate at 100 µg per lane and rabbit polyclonal to goat IgG (HRP) at 1/10,000 dilution;

For research use only, not for diagnostic use

### SICGEN's Proprietary Immunogen Policy

In order to produce high specific antibodies SICGEN has invested a lot of time and effort into selecting immunogen sequences. SICGEN has decided to protect this information by not publishing it on the website. However, these sequences are available on request.