

Catalogue No.

Qty:

800 µg

Anti-Human IgG

Source: Goat

General description: Goat polyclonal antibody to human IgG. IgG is a monomeric immunoglobulin, with two heavy chains and two light chains. IgG can be found in blood and is the most abundant immunoglobulin, constituting 75% of serum immunoglobulins in humans. There are 4 subclasses (IgG1 (66%), IgG2 (23%), IgG3 (7%) and IgG4 (4%)) that can bind to many types of pathogens, protecting the body against them by complement activation, opsonization for phagocytosis and neutralisation of their toxins.

Alternative names: Immunoglobulin G antibody.

Form: Polyclonal antibody supplied as a 200 µl (4 mg/ml) aliquot in PBS, 20% glycerol and 0.05% sodium azide. This antibody is epitope-affinity purified from goat antiserum.

Immunogen: Full human IgG affinity purified from serum of four normal donors

Specificity: Using serum samples detects the light and heavy chains by Western blot.

Reactivity: Reacts with Human proteins

Sample	WB	IHC (F)	IHC (P)	IF	ELISA
Human	+++	ND	ND	ND	ND

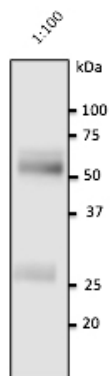
+++ excellent, ++ good, + poor, ND not determined

Usage:

WB: 1:500-1:2,000

Storage: For continuous use, store at 2-8 C for one-two days. For extended storage, store in -20 C freezer. Working dilution samples should be discarded if not used within 12 hours.

Special instructions: The antibody solution should be gently mixed before use..



For research use only, not for diagnostic use

SICGEN's Proprietary Immunogen Policy

In order to produce high specific antibodies SICGEN has invested a lot of time and effort into selecting immunogen sequences. SICGEN has decided to protect this information by not publishing it on the website. However, these sequences are available on request.