

**Catalogue No.**

**Qty:**

600 µg

## Anti-Albumin

**Source:** Goat

**General description:** Goat polyclonal antibody to Albumin. Albumin is a soluble, monomeric, globular unglycosylated serum protein of 66 kDa. This protein comprises about one-half of the blood serum protein. It has a role in stabilizing extracellular fluid volume and is a carrier protein for fatty acids and steroids

**Alternative names:** ALB, ANALBA, FDAH, PRO0883, PRO0903 and PRO1341 antibody.

**Form:** Polyclonal antibody supplied as a 200 µl (3 mg/ml) aliquot in PBS, 20% glycerol and 0.05% sodium azide. This antibody is epitope-affinity purified from goat antiserum.

**Immunogen:** Purified full length native Albumin.

**Specificity:** Using serum samples detects a band around 66 kDa by Western blot.

**Reactivity:** Reacts with Human, Rat, Mouse, Monkey and Canine proteins

Sample	WB	IHC (F)	IHC (P)	IF	ELISA
Human	+++	ND	ND	ND	ND
Rat	+++	ND	ND	ND	ND
Mouse	+++	ND	ND	ND	ND
Canine	+++	ND	ND	ND	ND
Monkey	+++	ND	ND	ND	ND

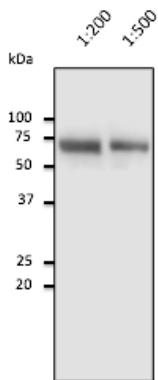
+++ excellent, ++ good, + poor, ND not determined

**Usage:**

WB: 1:500-1:5,000

**Storage:** For continuous use, store at 2-8 C for one-two days. For extended storage, store in -20 C freezer. Working dilution samples should be discarded if not used within 12 hours.

**Special instructions:** The antibody solution should be gently mixed before use..



Anti-Albumin Ab at 1/2,500 dilution; 10  $\mu$ l of diluted human serum per lane; Rabbit polyclonal to goat IgG (HRP) at 1/10,000 dilution;

For research use only, not for diagnostic use

**SICGEN's Proprietary Immunogen Policy**

In order to produce high specific antibodies SICGEN has invested a lot of time and effort into selecting immunogen sequences. SICGEN has decided to protect this information by not publishing it on the website. However, these sequences are available on request.