

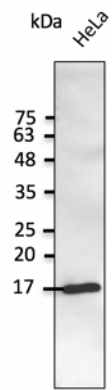
SNCG Polyclonal Antibody

Catalogue No*:	AB0287-100	Price/Unit*:	320.00
Source:	3	Quantity/unit size*:	300 g
Description:	Goat polyclonal antibody to SNCG. Gamma-Synuclein plays a role in neurofilament network integrity. It might be involved in modulating axonal architecture and the keratin network in skin during development and in the adult. Alternative names: BCSG1, Gamma-Synuclein, SR, Synuclein gamma antibody.		
Immunogen:	Recombinant peptide derived from within residues 80 aa to the C-terminus of human SNCG produced in <i>E. coli</i> .		
Specificity:	Detects endogenous levels of SNCG by Western blot. This Ab is specific for SNCG and does not recognize SNCA and SNCB proteins.		
Reactivity:	Reacts against human, rat, mouse, canine and monkey proteins.		
Usage:	Western blot 1:500-1:5,000 Immunofluorescence ND Immunohistochemistry (paraffin) ND Immunohistochemistry (frozen) ND		

Reactivity Chart

Sample	Western Blot	Immuno-fluorescence	Immuno-Histochemistry (p)	Immuno-Histochemistry (f)
human	+++	ND	ND	ND
rat	+++	ND	ND	ND
mouse	+++	ND	ND	ND
canine	+++	ND	ND	ND
monkey	+++	ND	ND	ND

Storage:	Store at -20 C for long-term storage. Store at 2-8 C for up to one month.
Special instructions:	Avoid freeze/thaw cycles.
References:	For research use only, not for diagnostic use



Anti-SNCG Ab at 1/2,500
dilution; lysate at 50 µg per lane;
rabbit polyclonal to goat IgG
(HRP) at 1/10,000 dilution;

Generated by - <http://www.sicgen.pt>