

Catalogue No.

Qty:

600 µg

Anti-Rab9 Pan

Source: Goat

General description: Goat polyclonal antibody to mouse Rab9. Rab9 belongs to the small GTPase superfamily, Rab family. This protein may be involved in endosome-to-Golgi transport.

Alternative names: RAB9, RAB9A, Rab9B, RAB9L, Rab-9L, RAB9-like protein, member RAS oncogene family, ras-related protein Rab-9A, ras-related protein Rab-9B antibody.

Form: Polyclonal antibody supplied as a 200 µl (3 mg/ml) aliquot in PBS, 20% glycerol and 0.05% sodium azide. This antibody is epitope-affinity purified from goat antiserum.

Immunogen: Purified recombinant peptide derived from within residues 115 aa to the C-terminus of mouse Rab9a and Rab9b produced in E. coli.

Specificity: Rab9 antibody detects endogenous levels of total Rab9 protein and transfected cells with GFP-Rab9a and GFP-Rab9b cds.

Reactivity: Reacts with Human, Rat, Mouse, Monkey and Canine proteins

Sample	WB	IHC (F)	IHC (P)	IF	ELISA
Human	+++	ND	ND	ND	ND
Rat	+++	ND	ND	ND	ND
Mouse	+++	ND	ND	ND	ND
Canine	+++	ND	ND	ND	ND
Monkey	+++	ND	ND	ND	ND

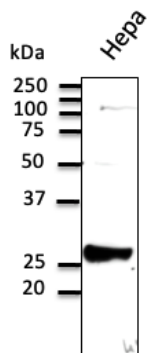
+++ excellent, ++ good, + poor, ND not determined

Usage:

WB: 1:250-1:2,000

Storage: For continuous use, store at 2-8 C for one-two days. For extended storage, store in -20 C freezer. Working dilution samples should be discarded if not used within 12 hours.

Special instructions: The antibody solution should be gently mixed before use..



Anti-Rab9 Ab at 1/500 dilution; Hepa cell line lysates at 100 µg per lane; rabbit polyclonal to goat IgG (HRP) at 1/10,000 dilution;

For research use only, not for diagnostic use

SICGEN's Proprietary Immunogen Policy

In order to produce high specific antibodies SICGEN has invested a lot of time and effort into selecting immunogen sequences. SICGEN has decided to protect this information by not publishing it on the website. However, these sequences are available on request.