

**Catalogue No.**

**Qty:**

200 µg

## Anti-mCherry

**Source:** Chicken

**General description:** Chicken polyclonal antibody to mCherry (Cherry fluorescent protein).

**Alternative names:** Cherry fluorescent protein; dsRed, red fluorescent protein, tdTomato antibody.

**Form:** Polyclonal antibody supplied as a 100 µl (2 mg/ml) aliquot in PBS, 20% glycerol and 0.05% sodium azide. Affinity purified using the immunogen immobilized on a solid support; Sample purity >95% (SDS-PAGE).

**Immunogen:** Affinity purified recombinant Red Fluorescent Protein (mCherry).

**Specificity:** This antibody recognizes a single band with predicted molecular weight in Western blot analysis.

**Reactivity:** Reacts with Transfected cells proteins

Sample	WB	IHC (F)	IHC (P)	IF	ELISA
Transfected cells	+++	ND	ND	+++	+++

+++ excellent, ++ good, + poor, ND not determined

**Usage:**

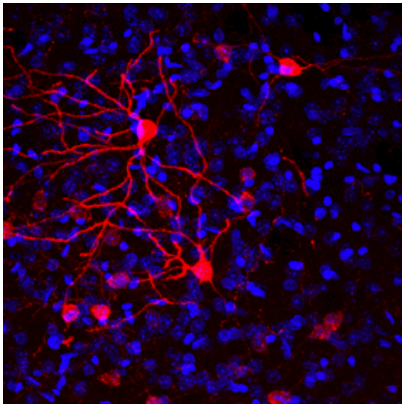
WB: 1:10,000-1:30,000

IF: 1:200-1:1,000

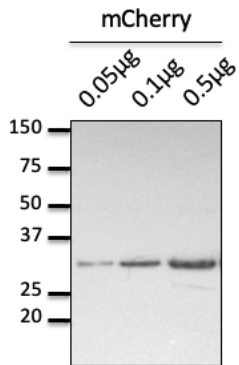
ELISA: 1:20,000-1:50,000

**Storage:** For continuous use, store at 2-8 C for one-two days. For extended storage, store in -20 C freezer. Working dilution samples should be discarded if not used within 12 hours.

**Special instructions:** The antibody solution should be gently mixed before use..



Immunofluorescence – Mice brain transduced with AAV with Cre-dependent expression of mCherry. Free-floating slices fixed with 4% of PFA. Ab at 1/1,000 dilution; Courtesy of Rodrigues, Univ Minho;



Anti-mCherry Ab at 1/15,000 dilution; 0.05 µg, 0.1 µg and 0.5 µg of purified recombinant mCherry; rabbit polyclonal to chicken IgY (HRP) at 1/10,000 dilution;

For research use only, not for diagnostic use

#### SICGEN's Proprietary Immunogen Policy

In order to produce high specific antibodies SICGEN has invested a lot of time and effort into selecting immunogen sequences. SICGEN has decided to protect this information by not publishing it on the website. However, these sequences are available on request.