

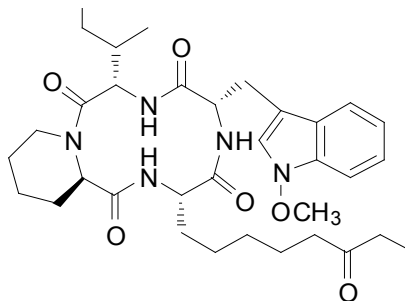
# Apicidin

Catalog Number P011-1MG

Catalog Number P011-5MG

## FEATURES

- Potent HDAC inhibitor
- Blocks cell cycle progression at G1
- Induces activation of HIV-1 promoter



ARBOR  
ASSAYS

## INTRODUCTION

Potent inhibitor of histone deacetylase (HDAC) activity and proliferation. Induces cell cycle arrest at the G1 phase. At 100nM it induces a long lasting hyperacetylation of histone H4 while that induced by trichostatin is transient. Stimulates apoptosis. Apoptosis is induced via induction of Fas/Fas ligand. Displays potent antiangiogenic effects and dramatically decreases HIF-1 $\alpha$  protein levels and transcriptional activity in human and mouse tumor cell lines. Apicidin is a fungal toxin that has broad spectrum activity against Apicomplexan parasites

**FORM:** White solid

**MOLECULAR WEIGHT:** 623.78

**STORAGE:** -20°C

**FORMULA:** C<sub>34</sub>H<sub>49</sub>N<sub>5</sub>O<sub>6</sub>

**CAS NUMBER:** 183506-66-3

**OTHER NAMES:** Cyclo[(2S)-2-amino-8-oxodecanoyl-1-methoxy-L-tryptophyl-L-isoleucyl-(2R)-2-piperidinexcarbonyl]

**USES:** Soluble in ethanol and DMSO to 10 mg/mL

## REFERENCES:

Cao, H., and Stamatoyannopoulos, G. Histone deacetylase inhibitor FK228 is a potent inducer of human fetal hemoglobin. *Am. J. Hematol.* 81, 981-983 (2006).

Mazitschek, R., Patel, V., Wirth, DF., et al. Development of a fluorescence polarization based assay for histone deacetylase ligand discovery. *Bioorg. Med. Chem. Lett.* 18, 2809-2812 (2008).

Abbas, HK., Gronwald, JW., Plaisance, KL., et al. Histone deacetylase activity and phytotoxic effects following exposure of duckweed (*Lemna paucicostata* L.) to apicidin and HC-toxin. *Phytopathology* 91:12, 1141-1148 (2001).