

Resorufin methyl ether *CAS 5725-89-3*

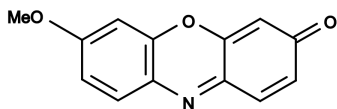
Catalog number: 15024

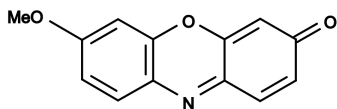
Unit size: 5 mg

Product Details

Storage Conditions	Freeze (<-15 °C), Minimize light exposure
Expiration Date	12 months upon receiving

Chemical Properties

Appearance	Red solid
Molecular Weight	227.21
Soluble In	DMSO
Chemical Structure	

**Spectral Properties**

Excitation Wavelength	571 nm
Emission Wavelength	584 nm

Applications

This fluorogenic resorufin ether is widely used for monitoring P450 activities in cell extracts and solutions. Cytochrome P450 oxidase (CYP450) is a large number of evolutionary related oxidative enzymes important in animal, plant, and bacterial physiology. Most cytochromes P450 (CYPs) have about 500 amino acids and a heme group at the active site.