

**Catalogue No.**

AB4669-100

**Qty:**

300 µg

## Anti-mStrawberry

**Source:** Goat

**General description:** Goat polyclonal antibody to mStrawberry (Strawberry fluorescent protein). mStrawberry is a basic (constitutively fluorescent), monomeric engineered derivative of red fluorescent protein (RFP) isolated from members of the Discosoma (mushroom coral) family. mStrawberry is a ~27 kDa protein that is optimally excited at a 574 nm and has a maximum of emission at 596 nm. It is used in research as a reporter to label and study the biology of the cell using a wide range of applications.

**Alternative names:** red fluorescent protein, Strawberry antibody.

**Form:** Polyclonal antibody supplied as a 100 µl (3 mg/ml) aliquot in PBS, 20% glycerol and 0.05% sodium azide. This antibody is epitope-affinity purified from goat antiserum.

**Immunogen:** Purified recombinant fluorescent protein produced in E. coli.

**Specificity:** In 293HEK cells transfected with cds plasmid detects a band of 27 kDa by Western blot. This antibody does not recognize GFP (green fluorescent protein).

**Reactivity:** Reacts with Transfected cells proteins

| Sample            | WB  | IHC (F) | IHC (P) | IF  | ELISA | IEM |
|-------------------|-----|---------|---------|-----|-------|-----|
| Transfected cells | +++ | +++     | +++     | +++ | ND    | +++ |

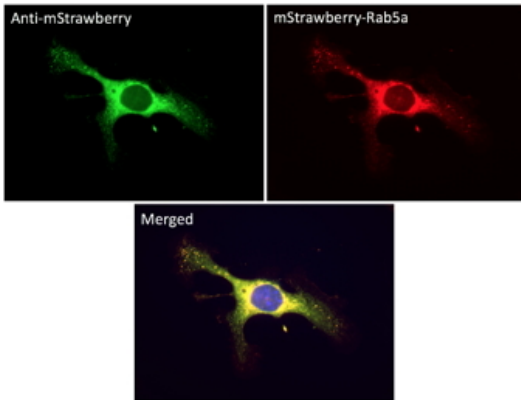
+++ excellent, ++ good, + poor, ND not determined

**Usage:**

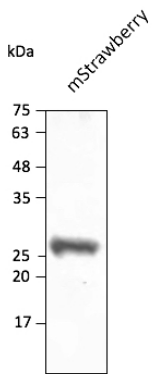
WB: 1:500-1:5,000  
 IHC (F): 1:50-1:500  
 IHC (P): 1:50-1:500  
 IF: 1:50-1:500  
 IEM: 1:50-1:500

**Storage:** For continuous use, store at 2-8 C for one-two days. For extended storage, store in -20 C freezer. Working dilution samples should be discarded if not used within 12 hours.

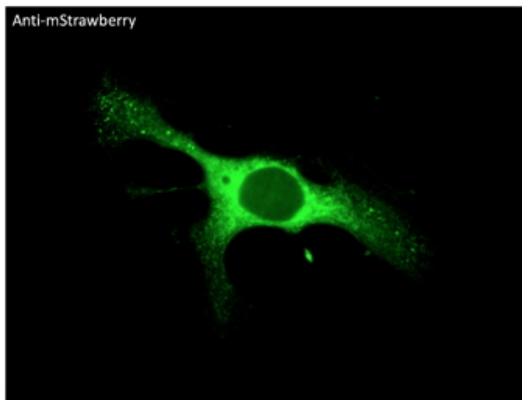
**Special instructions:** The antibody solution should be gently mixed before use..



Immunofluorescence –anti-mStrawberry Ab using hCEC cells transduced with mStrawberry-Rab5a; cells were fixed with methanol and anti-mStrawberry at 1/250;



Anti-mStraberry Ab at 1/2,500 dilution using HEK293 transfected cell lysates at 40 µg per lane; rabbit polyclonal to goat IgG (HRP) at 1/10,000 dilution;



Immunofluorescence –anti-mStrawberry Ab using hCEC cells transduced with mStrawberry-Rab5a; cells were fixed with methanol and anti-mStrawberry at 1/250;

For research use only, not for diagnostic use

**SICGEN's Proprietary Immunogen Policy**

In order to produce high specific antibodies SICGEN has invested a lot of time and effort into selecting immunogen sequences. SICGEN has decided to protect this information by not publishing it on the website. However, these sequences are available on request.