

Catalogue No.

AB49488

Qty:

250 µg

Anti-GAPDH, Dylight®488

Source: Goat

General description: Goat polyclonal to GAPDH (glyceraldehyde 3-phosphate dehydrogenase) conjugated to DyLight® 488. GAPDH catalyzes an important energy-yielding step in carbohydrate metabolism, the reversible oxidative phosphorylation of glyceraldehyde-3-phosphate in the presence of inorganic phosphate and nicotinamide adenine dinucleotide (NAD). The enzyme exists as a tetramer of identical chains.

Alternative names: glyceraldehyde 3-phosphate dehydrogenase, glyceraldehyde-3-phosphate dehydrogenase, G3PD, GAPD, HGNC:4141, GAPDH antibody.

Form: Polyclonal antibody supplied as a 100 µl (2.5 mg/ml) aliquot in PBS, 20% glycerol, 0.05% ProClin® and 0.05% sodium azide.

Immunogen: Purified recombinant peptide derived from within residues 240 aa to the C-terminus of human GAPDH produced in E. coli.

Specificity: Detects a band of 37 kDa by Western blot.

Reactivity: Reacts with Human, Rat, Mouse, Monkey, Zebrafish and Canine proteins

Sample	WB	IHC (F)	IHC (P)	IF	ELISA
Human	+++	+++	ND	+++	ND
Rat	+++	+++	ND	+++	ND
Mouse	+++	+++	ND	+++	ND
Zebrafish	+++	ND	ND	ND	ND
Canine	+++	+++	ND	+++	ND
Monkey	+++	+++	ND	+++	ND

+++ excellent, ++ good, + poor, ND not determined

Usage:

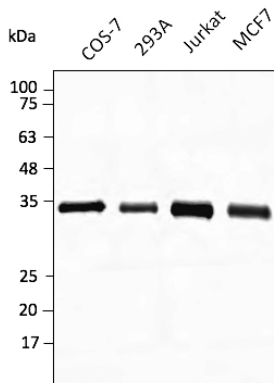
WB: 1:500-1:5,000

IHC (F): 1:200-1:1,000

IF: 1:50-1:250

Storage: Store at -20 C for long-term storage. Store at 2-8 C for up to one month.

Special instructions: Avoid freeze/thaw cycles..



Anti-GAPDH Ab conjugated to DyLight®488 (AB49488) at 1:2,000 using lysates at 30 µg per lane;

For research use only, not for diagnostic use

SICGEN's Proprietary Immunogen Policy

In order to produce high specific antibodies SICGEN has invested a lot of time and effort into selecting immunogen sequences. SICGEN has decided to protect this information by not publishing it on the website. However, these sequences are available on request.